

LIFETIME (PVD) FINISHES



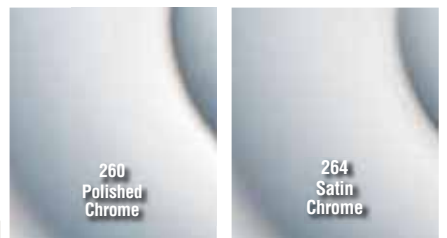
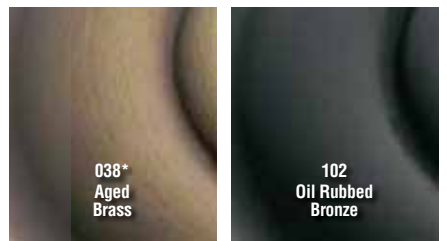
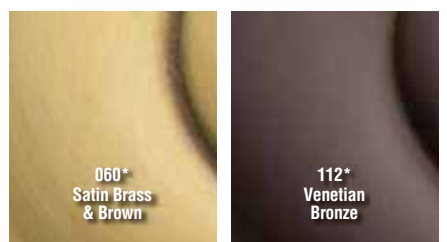
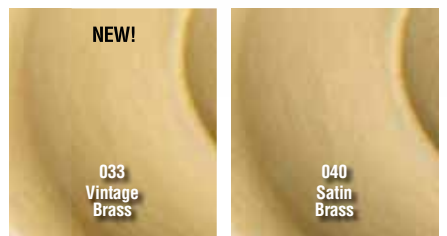
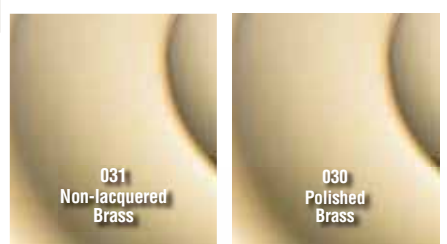
All Lifetime finishes are not alike.

The Baldwin Lifetime Finish uses a sophisticated formulation of layered nickel alloys to create crisp detailing, brilliantly pure color, and outstanding resistance to corrosion—particularly in salt air environments.

- > Made with patent-protected PVD technology that interrupts the aging process
- > 89% thicker finish than nearest competitor
- > Exclusive Satin & Polished Nickel Lifetime finishes in addition to Polished Brass

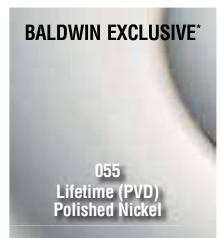
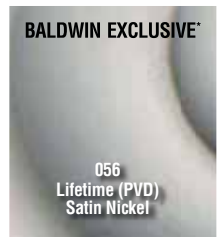
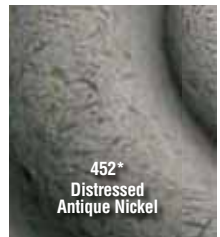
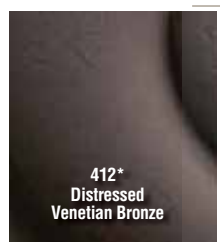
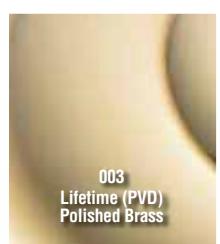
BALDWIN FINISHES

TIER 1



TIER 1

TIER 2



TIER 2

*HAND-RELIEVED FINISH VARIANCES:

(038, 050, 060, 112, 151, 412, 452)

Product finishes which are HAND RELIEVED may vary in luster, hue and appearance as a result of handcrafted variances in the final finishing step.

DISTRESSED FINISHES:

Not all hardware is available Distressed.

The rugged tumbling process would damage some components.

In cases where distressing is not possible, the equivalent non-distressed finish will be provided.

412 = 112

402 = 102

452 = 152 Antique Nickel with Matte lacquer (151 has gloss lacquer)

Hardware NOT available distressed includes:

- > All mortise locks, cylinders, latches, strikes
- > Certain levers & handleset trim (noted on those pages)

Baldwin #	US #	BHMA #
030 =	3	605
031 =	3NL	-
040 =	4	606
050 =	5	609
060 =	6	608
102 =	10B	613
150 =	15	619
190 =	19	622
260 =	26	625
264 =	26D	626
324 =	32D	630

TIER 1 FINISHES: STAINLESS STEEL HARDWARE ONLY

