

**BUILDER'S**  
LOCK & HARDWARE



**Your Key to Getting  
The Correct  
HOPPE®  
Multipoint - Single Pt.  
HLS9000  
Replacement  
Locks \***

Use Our HSL9000 Multipoint Online [Parts Finder](#),

Makes it easy and simple to identify which replacement gear you need

The Parts Finder will help you to gather the details of your lock and  
provide the correct part number

Take our online Parts Finder to the jobsite and fill it in at which point you  
will have a price to base your customer quote on and an option to order  
online

No more time consuming paper questionnaires to fill out and return to  
figure out which part you need

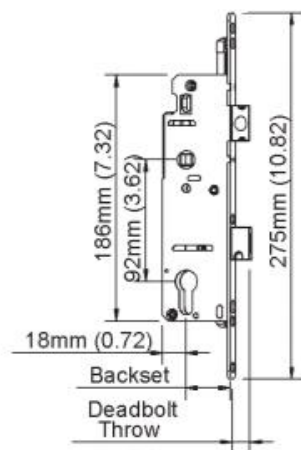
We stock all of the manual HLS9000 replacement lock bodies and they  
are ready to be shipped to you now!!

\*Please Note, Hoppe Parts are not marked with a part number. Proper Identification requires dimensions for backset, deadbolt projection and identification of Auxillary locking point. Do not open the lock body, nothing to repair. Replacement of the unit simplifies your work and reduces time spent. If your key is above the lever you have a series 7 lock. Call for more info.

## Efficiently Service Hoppe Multipoint Locks

Many Locksmiths have found it helpful and efficient to carry a Hoppe 45mm single point lock with them on service calls. Since the vast majority of multipoint locks are 45mm, one single point lock will cover 98% of calls. This single point lock can be used as a temporary replacement for a failed mechanism. Once installed and trim replaced, the customer is temporarily secure and operational. When you receive the replacement, revisit the customer, install the new lock, and take back the single point lock to be reused on future calls.

Your Customer will thank you for efficiently servicing their need and you will avoid the stress of having a customer who's home is unsecure.

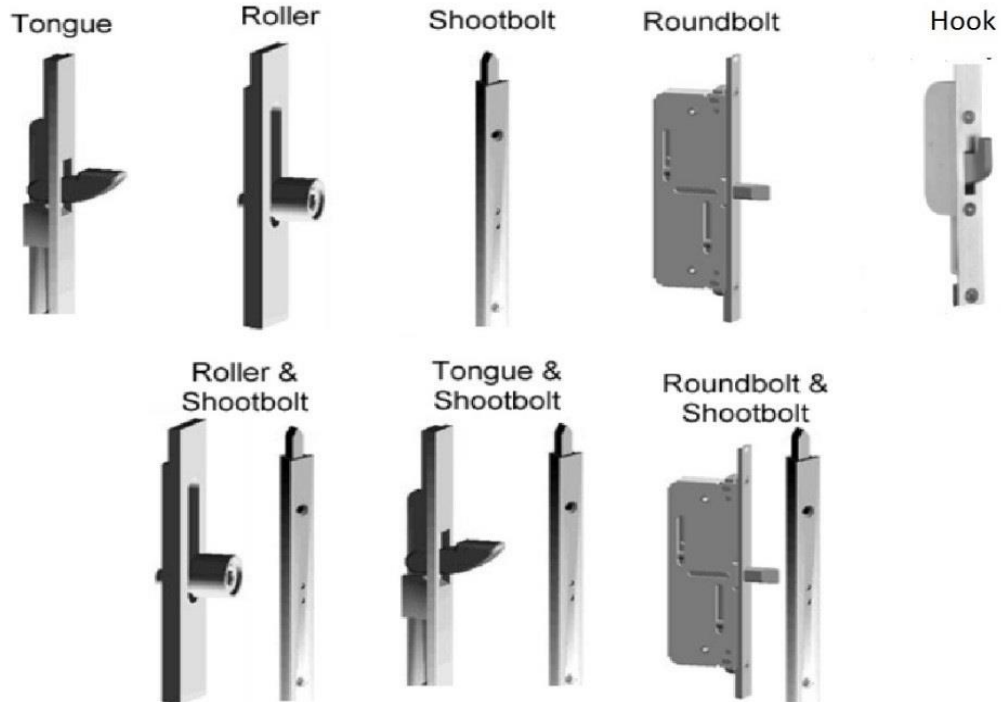


Tool Box Special: Hoppe Single Point 45mm.  
[Available Here](#) for only \$60 delivered.



## HLS 9000 3 & 5 Point Locking

### How to Identify and Spec Replacement Gears and Parts



1. Measure the width of the Multipoint system in the edge of the door. It should be either 16mm (5/8") or 20mm (25/32").

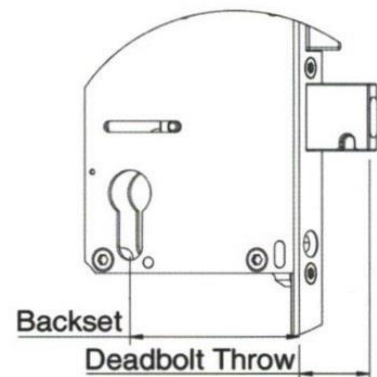
2. Identify which of the styles above matches the system in your door. If roller, tongue, or roundbolt measure the distance from the center of the handle to the roller, tongue, or roundbolt above and below.

3. Measure the backset as shown in the diagram, from the edge of the door to the center of the lock cylinder. It should be either 5mm (1.38"), 45mm (1.77"), 60mm (2.375"), or 70mm (2.75").

4. Measure the overall door height, handle height (.36") and thickness of the door.

5. Measure the deadbolt throw. It should be either 14mm (0.55") or 25.4mm (1").

6. Is this a "manual" or "automatic" door? Do you normally have to pull up on the lever to engage the multipoints or do they engage on their own when the door is closed?



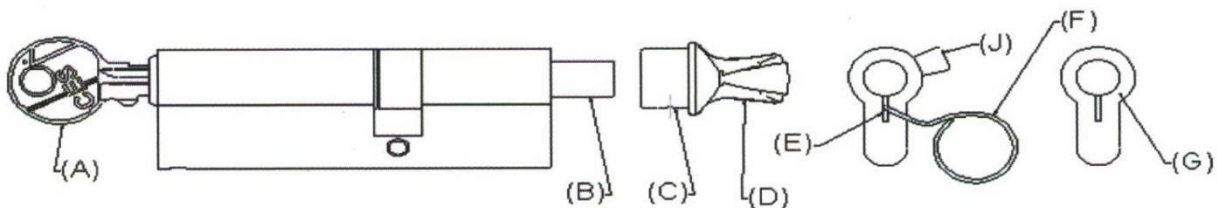
Once you have these measurements, you are ready to order replacement gears or parts for the Hoppe HLS 9000 multipoint locking system.

**Please Note:** The lock body (gear) is only available as a unit with the lower extension attached. No internal lock parts are available from Hoppe.



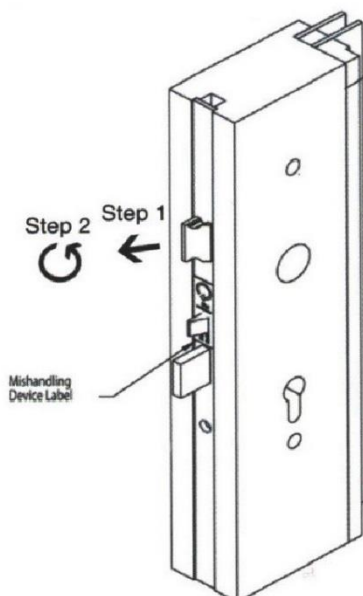
## How to Remove a 90-Degree Turn Cylinder

1. Remove cylinder screw from edge of door.
2. Loosen setscrew (C) on knob using the allen wrench provided.
3. Remove knob (D) from body of cylinder (B).
4. The drive tab (J) must be aligned with the cylinder to remove the cylinder from the lock mechanism. If the tab cannot be rotated to this position, push the pin (E) down with the ring wrench, or a paper clip with a small hook on the end if a ring wrench is not available to you at that time. (F) included to disengage the stops and turn the cylinder shaft (B) until the drive tab (J) is aligned with the cylinder (G).
5. Holding in this position, remove the cylinder body from the door.



## How to Change Hand in the Field

Push a small screwdriver in the hole behind the latch pushing it out. Once it is clear of the lockface, rotate the latch 180 degrees and release letting the latch back into place. Also pull the small mishandling device and rotate 180 degrees to finish the job.



152 Orne Street  
N. Attleboro, MA 02760  
Toll-free: 800-260-5625  
Local: 508-643-9100  
Fax: 508-643-9102

Check out our new  
**Parts Finder**, online at:  
[www.builderslock.com](http://www.builderslock.com)